

Posiflex Business Machines, Inc.
30689 Huntwood Avenue
Hayward, CA 94544
Tel: 510.429.7097
888.968.1668
Fax: 510.475.0982

POSIFLEXTM
Leaders in POS Terminal Technology

www.posiflexusa.com

KS6600/ KS7300 SERIES

Relocating the HDD from the Base to the Main Unit (For Wall Mount Configurations Only)

1. Detach the front panel cover.



2. Remove the HDD bracket fixing screw.

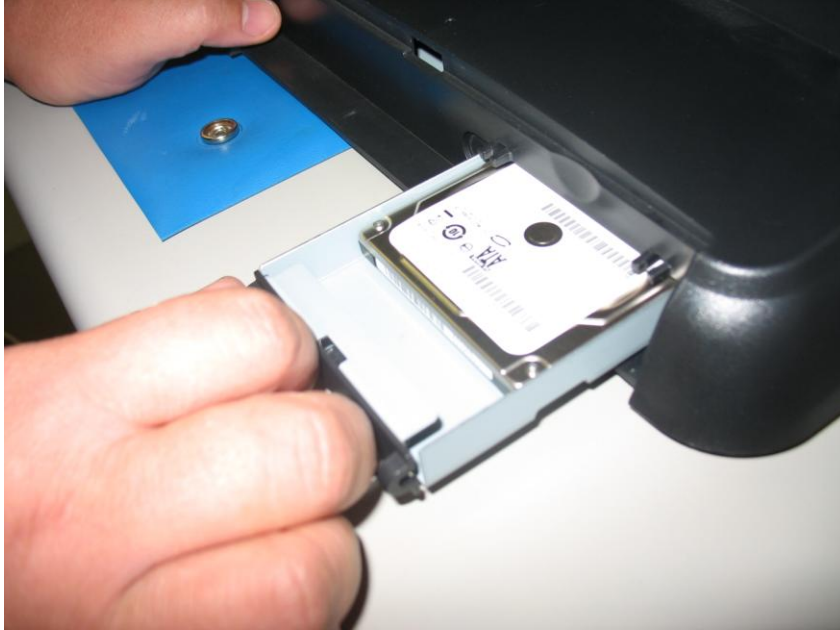


Posiflex Business Machines, Inc.
30689 Huntwood Avenue
Hayward, CA 94544
Tel: 510.429.7097
888.968.1668
Fax: 510.475.0982

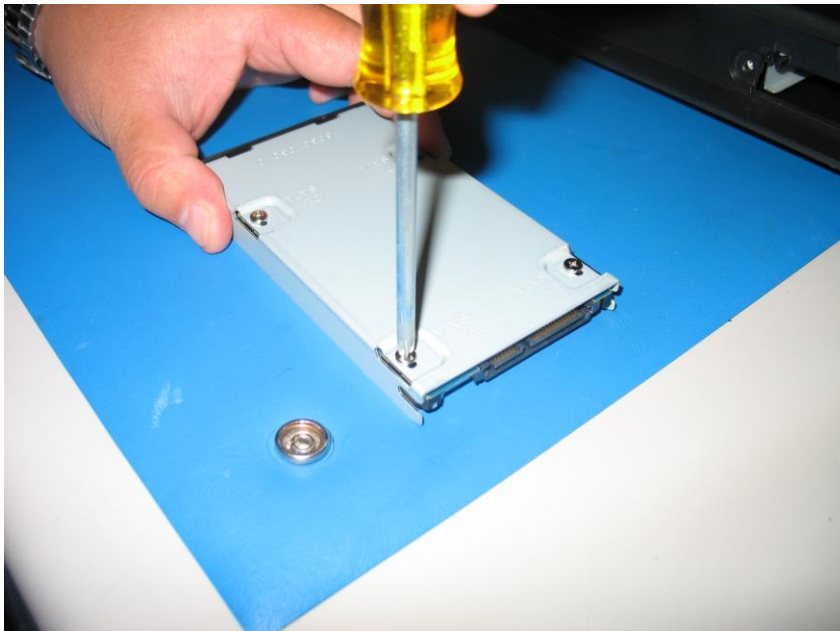
POSIFLEX™
Leaders in POS Terminal Technology

www.posiflexusa.com

3. Pull the HDD bracket outward.



4. Remove (4) screws from the bottom side of the HDD bracket. Please note that these screws should not to be used to secure HDD to the main unit.



Posiflex Business Machines, Inc.
30689 Huntwood Avenue
Hayward, CA 94544
Tel: 510.429.7097
888.968.1668
Fax: 510.475.0982

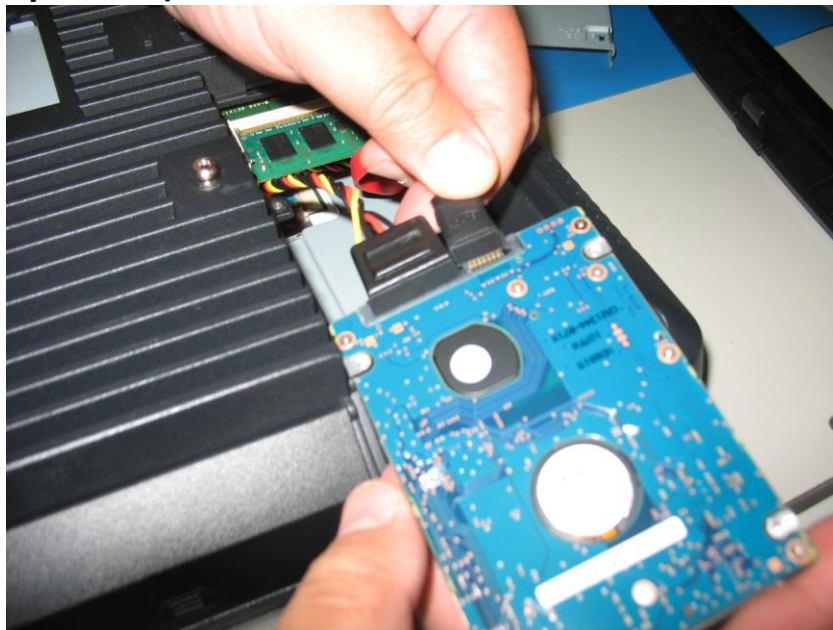
POSIFLEXTM
Leaders in POS Terminal Technology

www.posiflexusa.com

5. Remove (2) screws and lift up the HDD cavity.



6. Connect SATA interface and HDD power cable (supplied internally by default) to HDD.

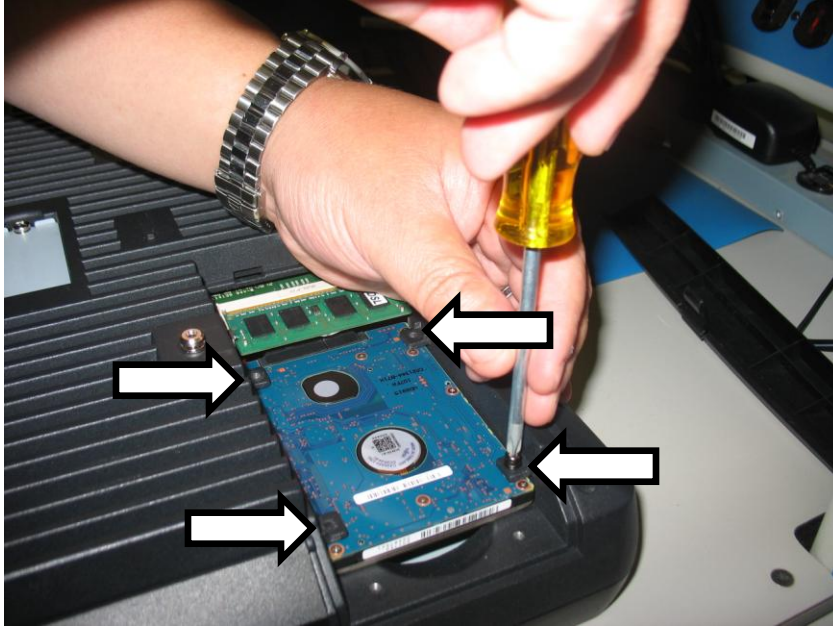


Posiflex Business Machines, Inc.
30689 Huntwood Avenue
Hayward, CA 94544
Tel: 510.429.7097
888.968.1668
Fax: 510.475.0982

POSIFLEX[™]
Leaders in POS Terminal Technology

www.posiflexusa.com

- 7. Slide and align the HDD along the (4) mounting screw holes. Then insert (4) screws (included in the WB6000 kit) to secure HDD.**



- 8. Install rear cover back to the back chassis and you are done.**

